

SUMS

2010 PROFILE

SHIGA UNIVERSITY OF MEDICAL SCIENCE



● The Emblem of Shiga University of Medical Science

This mark shows a combined image of “Ripples of Lake Biwa in Shiga” and “Wave motions of warmhearted light.” “Ripples” that move from the outside to the center indicate people’s hopes for medical care.



SHIGA UNIVERSITY
OF MEDICAL SCIENCE

Published February 2010
Edited by Planning and Management Office, Shiga University of Medical Science



A university,
trusted by the community,
and challenging the world



University President
Tadao Bamba

● PHILOSOPHY

Shiga University of Medical Science strives to serve the health and social welfare of the community by cultivating trustworthy medical professionals with the best possible training, and by promoting advanced research in medicine and nursing.

● OBJECTIVES

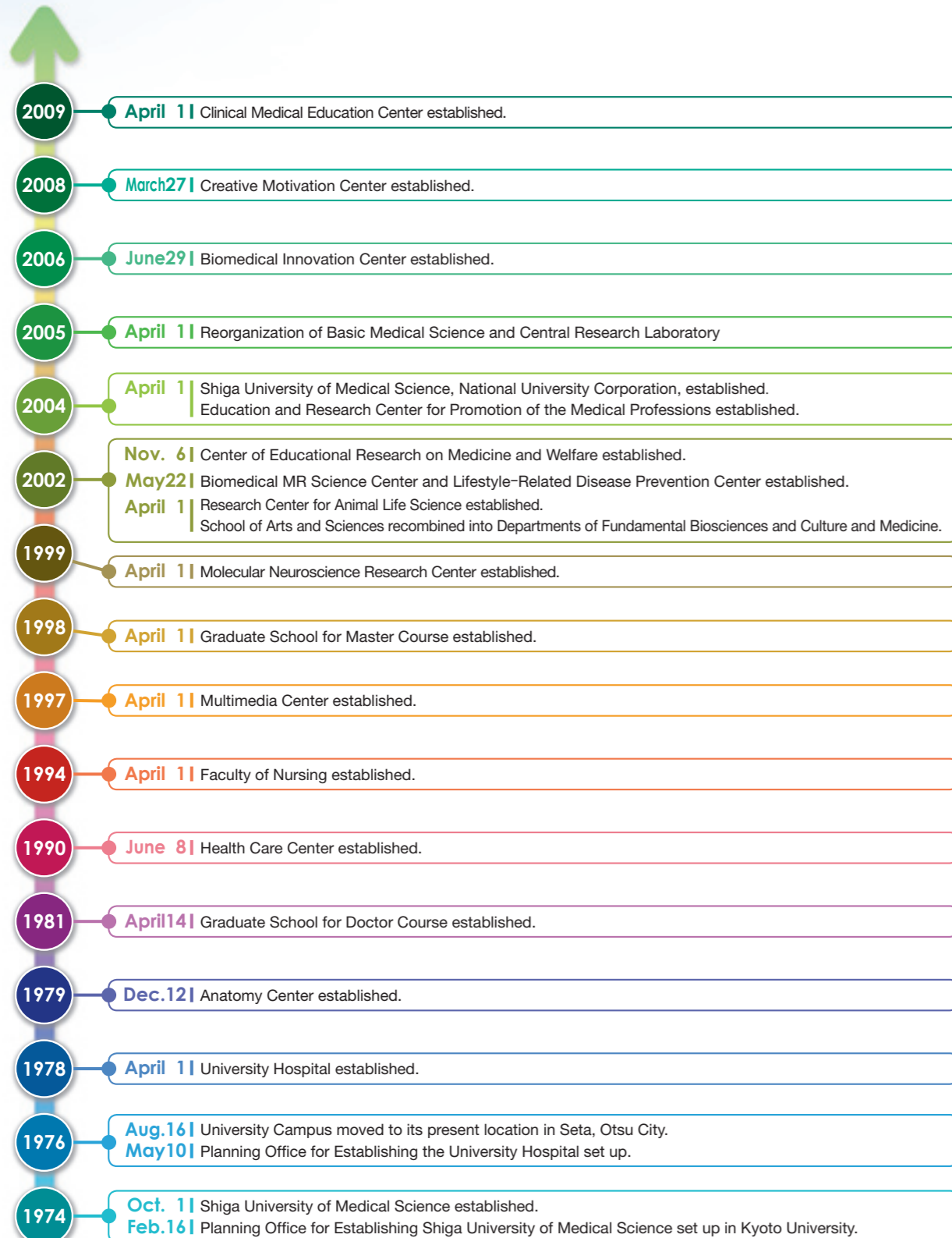
The principles of Shiga University of Medical Science are based on Japan's Fundamental Law of Education, the School Education Law and the National University Corporation Law. We provide students with a broad education in the liberal arts along with highly advanced professional skills in the fields of medicine and nursing. Our goal is to encourage a faithful sense of medical ethics and a spirit of scientific inquiry. This is to contribute to the development of medicine and nursing, and to the welfare of the community.

(The 1st article of the regulations of Shiga University of Medical Science)

● CONTENTS

| | |
|-----------------------------------|----|
| HISTORY | 3 |
| ACADEMIC CALENDAR | 4 |
| MEMBERS OF THE BOARD | 5 |
| ORGANIZATION CHART | 6 |
| DEPARTMENTS | 7 |
| ADMINISTRATIVE AND ACADEMIC STAFF | 9 |
| OUTLINE OF ACTIVITIES | 11 |
| NUMBER OF STUDENTS | 12 |
| INTERNATIONAL ACADEMIC EXCHANGES | 13 |
| UNIVERSITY LIBRARY | 15 |
| FACILITIES | 16 |
| UNIVERSITY HOSPITAL | 17 |
| DIAGNOSIS AND TREATMENT | 19 |
| MAP OF FACILITIES | 21 |
| NAME AND ADDRESS | 22 |

HISTORY



ACADEMIC CALENDAR



MEMBERS OF THE BOARD

Member of the Board

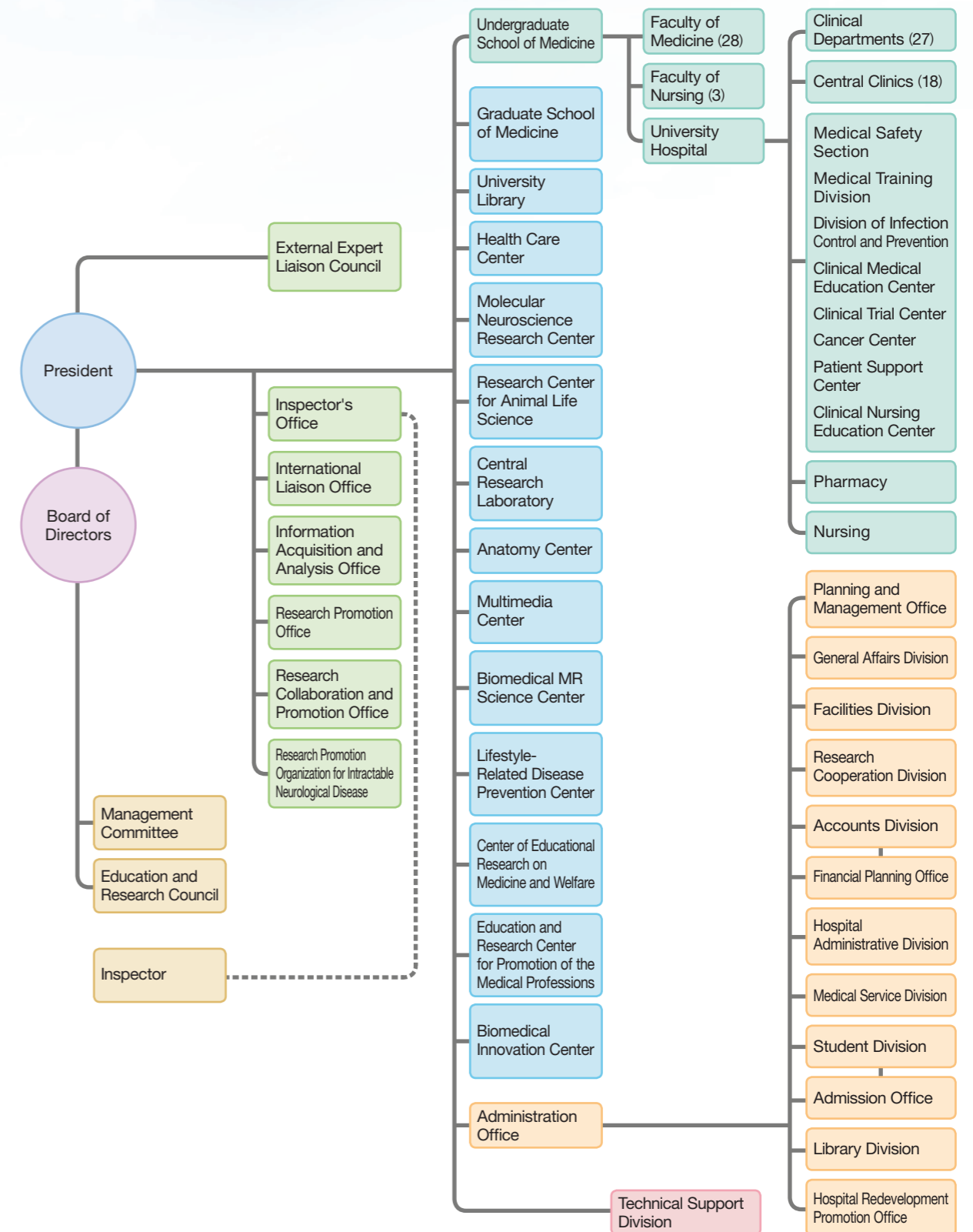
As of February 1, 2010

| President | Director | Inspector |
|-------------|--|---------------------------|
| Tadao Bamba | Academic Affairs and Vice President Takanori Hattori | Toshikazu Araki |
| | Medical Affairs, Vice President and Hospital Director Atsunori Kashiwagi | Ajunct Takashi Okumura |
| | Fiscal Affairs Norihisa Murayama | |
| | General Affairs Nobuo Wakisaka | |

| Management Committee | | | | Education and Research Council | | | |
|---------------------------------|--------------------|---|----------------------|--------------------------------|--------------------|--|-------------------|
| President | Tadao Bamba | President of Nagahama Institute Bio-Science and Technology | Yasutsugu Shimonishi | President | Tadao Bamba | Professors, Undergraduate School of Medicine | Osamu Hayashima |
| Director | Takanori Hattori | Chairman of Shiga Environmental Business Exhibition Association | Soujiro Takahashi | Director | Takanori Hattori | | Kihachiro Horike |
| | Atsunori Kashiwagi | Emeritus Professor, Kyoto Sangyo University | Masanori Nitta | | Atsunori Kashiwagi | | Tohru Tani |
| | Norihisa Murayama | Alumni Association Chairman, Neurosurgery Department, Chief, Public Koga Hospital | Kazuyoshi Watanabe | | Norihisa Murayama | | Kenichi Mitsunami |
| | Nobuo Wakisaka | | | | Nobuo Wakisaka | | Setsuko Ohta |
| Administrative Scrivener | Hironobu Ikeguchi | | | Curator, University Library | Iwao Ohkubo | Head of General Affairs Division | Yutaka Iwasaka |
| President of Sunrise Publishing | Junko Iwane | | | Chief, Faculty of Medicine | Yusaku Okada | Head of Student Affairs Division | Kenichi Yuasa |
| | | | | Chief, Faculty of Nursing | Kaoru Takigawa | | |

| External Expert Liaison Council | | | | | |
|--|------------------|--|----------------|---|----------------|
| Governor of Shiga Prefecture | Yukiko Kada | Director of Shiga Nursing Association | Toshiko Fujii | Vice-President of the Shiga University of Medical Science Alumni Association and Occupational Health Consultant | Hitoshi Kaneko |
| Mayor of Otsu-City | Makoto Mekata | President of the University of Shiga Prefecture | Naohiro Soga | Director of the Japanese-Deutches Kulturinstitut | Michio Okamoto |
| Mayor of Kusatsu-City | Wataru Hashikawa | President of Optex Co., Ltd. | Toru Kobayashi | | |
| Director of Shiga Doctor's Association | Yasuhiro Asano | Director of Shiga Environmental and Life Cooperative | Ayako Fujii | | |

ORGANIZATION CHART



Undergraduate School of Medicine

As of February 1, 2010

Faculty of Medicine

28
courses

1 Basic Medical Science

8
courses

| | |
|-------------------------|------------------------------------|
| Fundamental Biosciences | Biochemistry and Molecular Biology |
| Culture and Medicine | Pathology |
| Anatomy | Pharmacology |
| Physiology | Social Medicine |

2 Clinical Medicine

17
courses

| | |
|---|--|
| Internal Medicine | Urology |
| Pediatrics | Ophthalmology |
| Psychiatry | Anesthesiology |
| Dermatology | Radiology |
| Surgery | Dentistry and Oral and Maxillofacial Surgery |
| Orthopaedic Surgery | Clinical Laboratory Medicine |
| Neurosurgery | Emergency and Intensive Care |
| Otorhinolaryngology-Head and Neck Surgery | Family Medicine |
| Obstetrics and Gynecology | |

3 Department by Donations

3
courses

| | |
|-------------------------------------|-------------------------------------|
| Sleep Medicine | Community Perinatal Medical Systems |
| Innovative Cancer Treatment Project | |

Faculty of Nursing

3
courses

| | |
|---------------------|------------------------|
| Fundamental Nursing | Community Life Nursing |
| Clinical Nursing | |

Graduate School of Medicine

As of February 1, 2010

Doctor Course

5
majors

1 Biological Information Science

| | |
|--------------------------------------|----------------------------------|
| Minimally Invasive Medicine | Bio-Molecular Dynamics |
| Cell Information | Multi-Dimensional Image Analysis |
| Advanced Medical Specialist Training | |

2 Integrated Medical Science

| | |
|-------------------------|---|
| Neurological Regulation | Infectious Diseases and Immuno Regulation |
| Neuropathology | Mucosal Immunology |
| Endocrine Regulation | Advanced Medical Specialist Training |

3 Regeneration and Tumor Science

| | |
|--|-----------------------------|
| Reproduction, Development and Regeneration | Genome Oncology |
| ES Cell | Molecular Genetics |
| Tumor-Morphology Informatics | Oncologist Training Courses |
| Advanced Medical Specialist Training | |

4 Translational Research Science

| | |
|--------------------------------------|-------------------------------------|
| Disease and Organ Regulation | Artificial Organ and Bioengineering |
| Genetic Regulation Therapy | Advanced Pain Regulation |
| Advanced Medical Specialist Training | |

5 Science of Lifestyle-Related Diseases

| | |
|---|-----------------------------|
| Lifestyle-Related Disease Epidemiology | Work-Related Diseases |
| Vascular Function Regulation | Analytical Medical Genetics |
| Molecular Nutrition and Metabolism Regulation | |
| Advanced Medical Specialist Training | |

Master Course

1
major

1 Nursing

3
fields

| | |
|---------------------|---------------------------------|
| Fundamental Nursing | Family-Community Health Nursing |
| Clinical Nursing | |



ADMINISTRATIVE AND ACADEMIC STAFF



Number of Staff Members

As of February 1, 2010

| Classification | Members of the Board | Academic Staff | | | | | | Administrative Staff | Technicians and Nurses | Grand Total |
|------------------------------|---|----------------|--------------------------|---------------------------|----------------------|---------------------|-------|----------------------|------------------------|-------------|
| | | Professors | Associate Professors (I) | Associate Professors (II) | Assistant Professors | Research Associates | Total | | | |
| Present Number | 6 (1) | 62 | 43 | 42 | 160 | 11 | 318 | 129 | 662 | 1115 (1) |
| Assignments of current staff | President | 1 | | | | | | | | 1 |
| | Directors | 4 | | | | | | | | 4 |
| | Inspectors | 1 (1) | | | | | | | | 1 (1) |
| | Undergraduate School of Medicine | | 54 | 30 | 10 | 79 | 9 | 182 | 10 | 192 |
| | University Hospital | | 1 | 8 | 31 | 72 | | 112 | 621 | 733 |
| | Health Care Center | | | | 1 | | | 1 | 1 | 2 |
| | Molecular Neuroscience Research Center | | 4 | 2 | | 3 | | 9 | | 9 |
| | Research Center for Animal Life Science | | 1 | 1 | | 3 | | 5 | 5 | 10 |
| | Central Research Laboratory | | | 1 | | | 1 | 2 | 6 | 8 |
| | Multimedia Center | | | | | | 1 | 1 | | 1 |
| | Biomedical MR Science Center | | 1 | 1 | | | | 2 | | 2 |
| | Lifestyle-Related Disease Prevention | | 1 | | | 3 | | 4 | | 4 |
| | Administration Office | | | | | | | | 129 | 19 |

Note: () = number of part-time

Center Director, etc.

As of February 1, 2010

| | | | |
|--|---|---|---|
| Advisor to the President (Curriculum Coordinator) Kihachiro Horiike | Advisor to the President (Gender Equality) Iwao Ohkubo | | |
| University Library Curator Iwao Ohkubo | Health Care Center Director Yoshihide Fujiyama | Molecular Neuroscience Research Center Director Hiroshi Kimura | Research Center for Animal Life Science Director Ryuzo Torii |
| Center Research Laboratory Director Hiroshi Matsuura | Anatomy Center Director Kazumasa Ogasawara | Multimedia Center Director Iwao Ohkubo | Biomedical MR Science Center Director Toshiro Inubushi |
| Lifestyle-Related Disease Prevention Center Director Minoru Horie | Center of Educational Research on Medical and Welfare Director Kenichi Mitsunami | Education and Research Center for Promotion of the Medical Professions Director Takanori Hattori | Biomedical Innovation Center Director Tohru Tani |

Undergraduate School of Medicine

As of February 1, 2010

| Faculty of Medicine | | | | Faculty of Nursing | |
|------------------------------------|------------------------------|---|--|--|---|
| Chief (held concurrently) | Yusaku Okada | Clinical Medicine | | Chief (held concurrently) | Kaoru Takigawa |
| Basic Medical Science | | Professor Minoru Horie | | | Professor Shigehiro Morikawa |
| | Professor Fukuo Yoshida | Internal Medicine | Professor Yoshihide Fujiyama | Fundamental Nursing | Professor Momoko Sakaguchi |
| | Professor Takahide Kimura | | Professor Hiroshi Maegawa | | Professor Keiko Kato |
| Fundamental Bioscience | Professor Hiroshi Sato | Pediatrics | Professor Yoshihiro Takeuchi | | Professor Kaoru Takigawa |
| | Professor Masaru Komori | Psychiatry | Professor Naoto Yamada | | Professor Naomi Miyamatsu |
| | Professor Osamu Hayashima | Dermatology | Professor Toshihiro Tanaka | Clinical Nursing | Professor Yoshihiro Endo |
| Culture and Medicine | Professor Hidemi Taira | Surgery | Professor Tohru Tani | | Professor Hiroko Watanabe |
| | Professor Reiko Aiura | | Professor Tohru Asai | | Professor Hiromi Kuwata |
| Anatomy | Professor Motoi Kudo | Orthopaedic Surgery | Professor Yoshitaka Matsusue | | Professor Setsuko Ohta |
| | Professor Kohnosuke Jinnai | Neurosurgery | Professor Kazuhiko Nozaki | Community Life Nursing | Professor Hitoshi Yasuda |
| Physiology | Professor Hiroshi Matsuura | Otorhinolaryngology-Head and Neck Surgery | Professor Takeshi Shimizu | | Professor Hiroyo Hatashita |
| | Professor Kihachiro Horiike | Obstetrics and Gynecology | Professor Takashi Murakami | Molecular Neuroscience Research Center | |
| Biochemistry and Molecular Biology | Professor Iwao Ohkubo | Urology | Professor Yusaku Okada | Neurology Unit | Associate Professor Masaki Nishimura |
| | Professor Hiroshi Kimura | Ophthalmology | Professor Masahito Ohji | Unit for Neuropathology and Diagnostics | Professor Ikuo Tohyama |
| | Professor Hiroyuki Sugihara | Anesthesiology | Professor Shuichi Nosaka | | Special Contract Professor Hiroyasu Taguchi |
| Pathology | Professor Kazumasa Ogasawara | Radiology | Professor Kiyoshi Murata | Unit for Neurobiology and Therapeutics | Associate Professor Makoto Urushitani |
| | Professor Bin Gotoh | Dentistry Oral and Maxillofacial Surgery | Professor Gaku Yamamoto | Neuroanatomy Unit | Professor Hiroshi Kimura |
| Pharmacology | Professor Tomio Okamura | Clinical Laboratory Medicine | Professor Hidetoshi Okabe | Unit for Animal Models of Neurological Disorders | Guest Professor Yoshisuke Takahashi |
| | Professor Katsuyuki Miura | Emergency and Intensive Care | Professor Yutaka Eguchi | Biomedical MR Science Center | |
| Social Medicine | Professor Katsuji Nishi | Family Medicine | Professor Kenichi Mitsunami | Project of Molecular and Cellular Biophysics | Professor Toshiro Inubushi |
| Graduate-level Medical Research | | Department by Donations | | Applied Biological Information Project | Associate Professor Akihiko Shino |
| Mucosal Immunology | Professor Akira Ando | Sleep Medicine | Special Contract Professor Soichiro Miyazaki | Research Center for Animal Life Science | |
| | | | Special Contract Professor Masako Ohkawa | | Professor Ryuzo Torii |
| | | Community Perinatal Medical Systems | Special Contract Professor Kentaro Takahashi | | Guest Professor Teruhiko Wakayama |
| | | Innovative Cancer Treatment Project | Special Contract Professor Yataro Daigo | Life style-Related Disease Prevention Center | |
| | | | | | Special Contract Professor Hirotugu Ueshima |

OUTLINE OF ACTIVITIES

Undergraduate Education

- **Setting goals for national examination pass rates**
Shiga University of Medical Science is aiming for its students to achieve a pass rate of 95% or more in the National Examination for medical practitioners, 98% or more in the National Examination for nursing practitioners, and 95% or more in the National Examination for public health nursing practitioners.
- **Implementing hands-on training in comprehensive medicine for all students**
Based on the success of education projects such as training for patient visits, the university has established hands-on training in comprehensive medicine for all students and is working to develop the abilities of students to communicate and think logically.
- **Medical student support program through local "foster parents"**
With the goal of training doctors and nurses who will be in charge of future local medical services, Shiga University of Medical Science has established an advising system for students in which people including graduates are assigned as "foster parents" and local residents as "semi-foster parents" to students from when they first enter the university.



Graduate Education

- **Cancer professional training**
Shiga University of Medical Science trains cancer specialists in the fields of radiation therapy, chemotherapy, and palliative therapy.
- **Advanced specialization training**
The university has created an Advanced Specialist Training Program for all study courses and aims for the students to obtain doctorates, becoming specialist doctors.
- **Promotion of bio-medicine**
Through a strategic partnership with Nagahama Institute of Bio-science and Technology, Shiga University of Medical Science is developing cutting-edge bio-medicine.



Promotion of Priority Research Projects

| | | |
|---|---|--|
| 1 | Medical research using monkeys | <ul style="list-style-type: none"> ● Research on regenerative medicine, induction of ES cell differentiation, and establishment of iPS cells ● Development of vaccines for new influenza strains ● Creation of disease models for such as Alzheimer's disease and ALS |
| 2 | Research on intractable neurological diseases | <ul style="list-style-type: none"> ● Research on the diagnosis and treatment of Alzheimer's disease ● Research on the causes of ALS |
| 3 | Medicine related to magnetic resonance (MR) | <ul style="list-style-type: none"> ● Research on molecular imaging using animal models ● Promotion of minimally invasive medical treatments |
| 4 | Medicine related to life-style disease | <ul style="list-style-type: none"> ● Large-scale collaborative research on the prevention of life-style related diseases ● Research on the epidemiology of arterial sclerosis ● Research on predictive health risk factors, particularly of high blood pressure and obesity |

Next Generation Research Projects

- Development of robots for use within the body (JST Innovation Project, City Area Program)
- Application of nanoparticles in medicine (JST Innovation Project, City Area Program)
- Research on tumor suppressor gene (RB1CC1) (Grand-in-Aid for Scientific Research on Priority Areas)
- Research on human testicular tumors (Grand-in-Aid for Scientific Research (B))
- Research on cardiac arrhythmia by ion channel abnormalities (Grand-in-Aid from the Ministry of Health, Labor and Welfare)



Educational Activities

Research Activities

Management

Management-related Efforts

- Shiga University of Medical Science is compiling the next 6-year plan for staffing, finance and facilities in order to promote further development in education, research and treatment.

Personnel-related Efforts

- Shiga University of Medical Science implements a strict and proper staff management system.
- We implement faculty/staff evaluations, and the results of evaluations will be reflected in funding and incentives.

Evaluation-related Efforts

- We are compiling a multi-faceted evaluation plan, taking into account the results of the Corporation and Certification Evaluation System and with advice from university staff members.

NUMBER OF STUDENTS

Undergraduate Students

As of February 1, 2010

| Faculty | Students | Total | Target number per year | Number of graduates |
|---|----------|------------|------------------------|---------------------|
| Faculty of Medicine | Male | 367 | 93 | 2,075 |
| | Female | 230 | | |
| | Subtotal | 597 | | |
| Transferred graduate students in the 2nd semester of the 2nd year | Male | 28 | 17 | 2,807 |
| | Female | 22 | | |
| Faculty of Nursing | Male | 13 | 60 | 26 |
| | Female | 251 | | |
| | Subtotal | 264 | | |
| Transferred students in the 3rd year | Male | 0 | 10 | 822 |
| | Female | 20 | | |
| Total | | 861 | 153 | 3,629 |

Graduate Students

As of February 1, 2010

| Courses | Present numbers | | | | | | Target number per year | Target total number |
|---------------------------------------|-----------------|-----------|-----------|-----------|-----------|------------|------------------------|---------------------|
| | Students | 1st | 2nd | 3rd | 4th | Total | | |
| Biological Information Science | Male | 1 | 1 | 0 | 4 | 6 | 6 | 24 |
| | Female | 1 | 1 | 2 | 1 | 5 | | |
| Integrated Medical Science | Male | 6 | 1 | 2 | 2 | 11 | 7 | 28 |
| | Female | 2 | 3 | 4 | 1 | 10 | | |
| Regeneration and Tumor Science | Male | 2 | 4 | 1 | 1 | 8 | 5 | 20 |
| | Female | 0 | 3 | 2 | 1 | 6 | | |
| Translational Research Science | Male | 12 | 8 | 9 | 16 | 45 | 7 | 28 |
| | Female | 3 | 3 | 5 | 7 | 18 | | |
| Science of Lifestyle-Related Diseases | Male | 1 | 3 | 5 | 3 | 12 | 5 | 20 |
| | Female | 2 | 1 | 1 | 4 | 8 | | |
| Subtotal | | 30 | 28 | 31 | 40 | 129 | 30 | 120 |
| Master Program | Male | 3 | 2 | — | — | 5 | 16 | 32 |
| | Female | 10 | 17 | — | — | 27 | | |
| Subtotal | | 13 | 19 | — | — | 32 | 16 | 32 |
| Total | | 43 | 47 | 31 | 40 | 161 | 46 | 152 |

INTERNATIONAL ACADEMIC EXCHANGES



Since it was founded in 1975, Shiga University of Medical Science (SUMS) has actively promoted international academic exchanges. The goal of these exchanges is to foster the talents of students pursuing careers in medicine and the efforts of those engaged in medical research and education. Academic exchange agreements have been concluded with several major universities throughout the world. To date, SUMS has welcomed many students and scholars from overseas through these programs. In the past 10 years, SUMS accepted about 100 guest researchers, and 28 researchers entered the graduate school, and got the Doctor in Medicine Degree. There are currently 7 graduate students, and 7 scholars working in their respective fields at the university, representing the countries of England, Bangladesh, China, Brazil, Kenya, Egypt, Belarus and Vietnam. In addition, the number of university staff and faculty members dispatched abroad to attend international conferences or to work with their overseas counterparts has been increasing yearly. Since 2003, SUMS has been providing a curriculum of voluntary study for 4th year students to study abroad, and nearly 30 students go to universities, research institutes and hospitals worldwide every year.

To help meet the housing needs of the growing number of visiting students and scholars, SUMS constructed an International House, which was completed in 1994. The building is a three-story residence offering a broad range of amenities in a convenient location at the edge of campus. Any registered student or scholar from overseas, along with their family members, is qualified to reside at the International House.

Academic exchange agreements and International House accommodations are helping to keep SUMS at the forefront of international cooperation and learning in all medical fields.



Creative Motivation Center



International House

Foreign Students

As of February 1, 2010

| Country | Year | 2005 | 2006 | 2007 | 2008 | 2009 |
|--------------|------|-----------|-----------|-----------|----------|----------|
| Bangladesh | | 2 | 2 | 2 | 1 | |
| Mongolia | | 1 | 1 | 1 | | |
| China | | 6 | 4 | 4 | 3 | 4 |
| Taiwan | | 2 | 1 | 1 | 1 | |
| Bulgaria | | 1 | 1 | | | |
| Hungary | | 1 | 1 | 1 | 1 | |
| Egypt | | 1 | 1 | 1 | 2 | 1 |
| Belarus | | | 1 | 1 | 1 | 1 |
| Vietnam | | | | | | 1 |
| Total | | 14 | 12 | 11 | 9 | 7 |

Universities with Cooperative Agreements

| Institution | Country | Date Agreed |
|---|---------|-------------|
| Beihua University | China | 1984.11.24 |
| Changchun Municipal Hospital | China | 1984.11.24 |
| The University of British Columbia | Canada | 1990. 7.26 |
| University of Michigan | USA | 1990.11.29 |
| China Medical University | China | 1993. 9.28 |
| Rome University "La Sapienza" | Italy | 1994.10.28 |
| The University of Picardie Jules Verne | France | 1995. 5.16 |
| Harbin Medical University | China | 2001.11.21 |
| University Hospital of Amiens-Picardie | France | 2004.10. 4 |
| Cho Ray Hospital | Vietnam | 2006.12.25 |
| University of Medicine and Pharmacy at Ho Chi Minh City | Vietnam | 2008. 6.23 |
| The Japan Center for Michigan Universities | USA | 2008.11.19 |
| Northeastern University | China | 2009. 5. 1 |

International House

| Type | Area | Number |
|-------------|-------------------|--------|
| Single Room | 16 m ² | 16 |
| Double Room | 40 m ² | 5 |
| Family Room | 60 m ² | 3 |



Visit by Beihua University Delegation



Foreign Students Excursion



Social Meeting with International Students



Signing Ceremony with Ho Chi Minh University

UNIVERSITY LIBRARY

FACILITIES



Library and Multimedia Collaboration Center



University Library



University Library



Basic Medicine Education and Research Building



School of Nursing Building



University Hospital



New Ward D



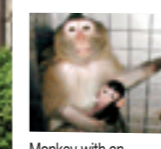
Pediatric Ward



Research Center for Animal Life Science



Seven Tesla MR Device



Monkey with an Artificially Fertilized Baby



NMR Center



Biomedical Innovation Center

Library Holdings

As of February 1, 2010

| Section | Books | | | Number of Journals (titles) | | |
|-------------------|----------|---------|---------|-----------------------------|---------|-------|
| | Japanese | Foreign | Total | Japanese | Foreign | Total |
| Medicine | 52,864 | 73,990 | 126,854 | 729 | 1,386 | 2,115 |
| General Education | 20,767 | 6,164 | 26,931 | 51 | 30 | 81 |

Use of the Library

As of February 1, 2010

| Items | Numbers | |
|-----------------------------|-----------|-------|
| Items Borrowed | Books | 9,575 |
| | Journals | 2,541 |
| Copying of Documents | Received | 4,042 |
| | Requested | 3,626 |
| Audiovisual Facilities Used | 106 | |





Philosophy Holistic Medicine Pursuing the Achievement of Confidence and Satisfaction

Basic Policies

Established April 1, 1978
 Opened October 1, 1978
 Beds 608
 Building Ground Area 15,923m²
 Total Floor Space 56,376m²

- Provide patient-oriented medical care
- Aim for a hospital with confidence, relief and satisfaction
- Provide highly-advanced medical care with a kind hospitality
- Aim for a community-based university hospital
- Educate medical professionals receiving recognition in world medical community
- Aim for a sound hospital management

Training of Highly Qualified Medical Professionals

- **Providing basic medical training in the local community through various effective, wide-ranging training programs**
The Clinical Medical Education Center runs extensive training programs.
- **Educating specialized medical professionals**
Providing Core Life-long Advanced Specialist Training Programs.
- **Promoting the specialization and certification of co-medical staff**
The acquisition of specialized qualification is promoted.

Providing Highly Qualified Medical Treatment

- **Promoting advanced, specialized cardiovascular medical care**
 - Promoting interventional treatment for patients with coronary artery diseases and cutting-edge medical care for those with serious arrhythmia.
 - Promoting advanced, specialized cardiovascular surgery.
- **Promoting advanced cancer treatments**
 - The university hospital is a core hospital for cancer treatment in Shiga prefecture, and expanding its capabilities as a Cancer Center.
 - Promoting specialist training courses in multidisciplinary cancer therapy.

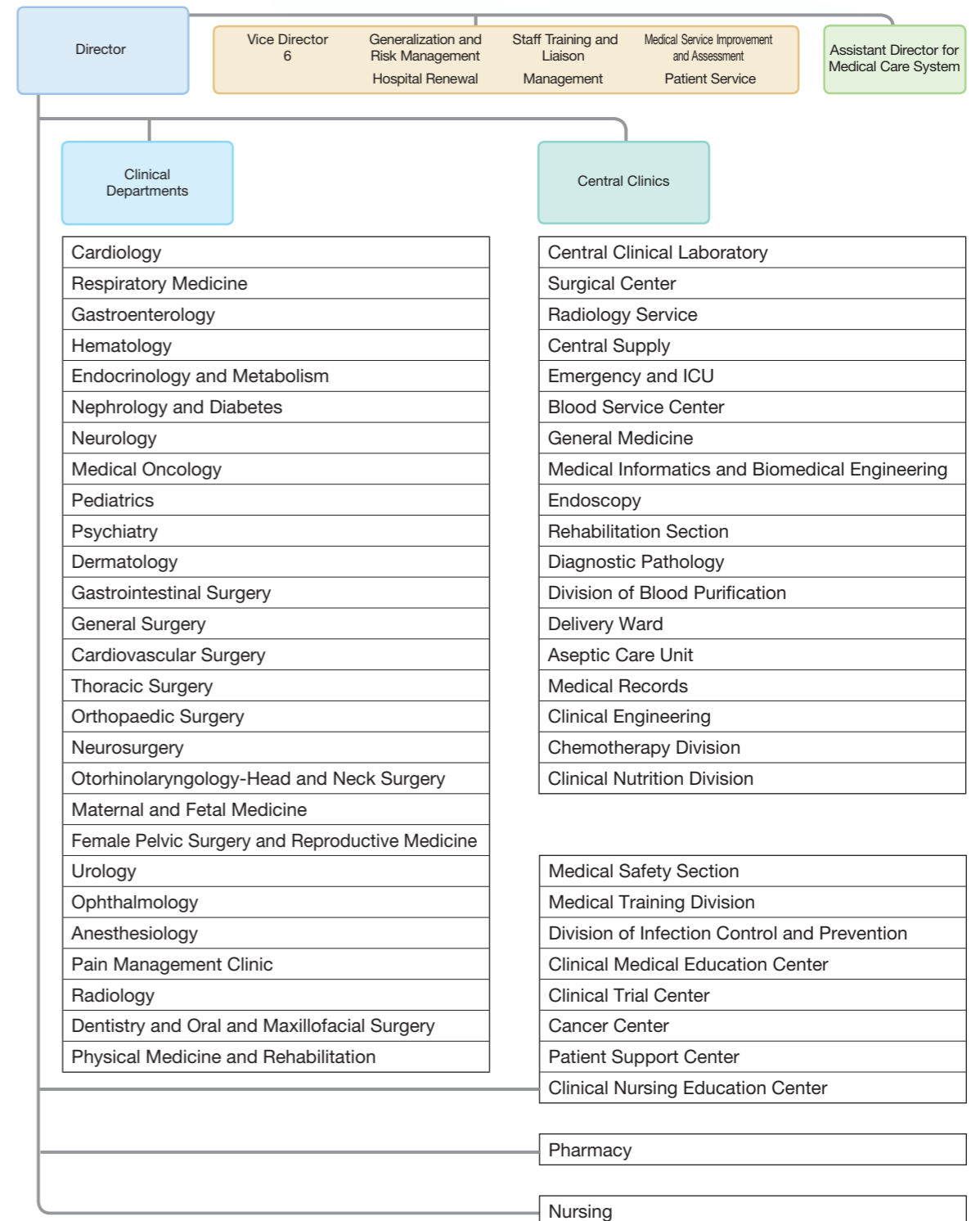
Contributing to Local Medical Care

- The capabilities of the Patient Support Center will be expanded, and partnership with local medical facilities, promoted.
- The goal is to create a system that lets residents of the prefecture receive enough cancer treatment.
- The university will contribute to local medical care through various efforts including a perinatal care system and emergency medical care system.

Hospital Renewal (working to realize ideal medical care)

- Renovation of wards A and B will be completed, wrapping up the redevelopment of wards and transforming them into ones with greater amenities and enhanced safety management.
- In addition to providing the maternal and fetal medicine ward and pediatrics ward with the latest equipment, the NICU and GCU capabilities will be strengthened, and perinatal medical care expanded.
- A Cell Therapy Center will be newly built and capabilities of the Endoscopy Center will be strengthened.
- A new surgery ward will be completed, creating an advanced surgery system.

Organization Chart



DIAGNOSIS AND TREATMENT

As a regional core hospital, the university hospital has striven to provide high quality medicine and to train specialized medical personnel. In addition to raising the quality of patient services, our hospital has renewed its Quality Health Care Evaluation (Ver. 5) conducted by the Japan Council for Quality Health Care.

Providing Patients with Advanced Medicine

Providing advanced medical technology

Advanced medical technology refers to the technology that the Ministry of Health, Labor and Welfares has approved as most advanced. This approval is granted only for the medical facilities that possess well-trained staff and up-to-date facilities and equipment. The following five technologies are available at our hospital (as of Nov. 1, 2009).

1 Non-invasive diagnosis of diabetic foot syndrome using 31-phosphorous magnetic resonance spectroscopy and chemical shift imaging

Foot diseases are diagnosed early and correctly by this non-invasive method.



2 Immunotherapy for cancer patients using dendritic cells and tumor antigen peptides

Dendritic cells that induce killer lymphocytes against cancer cells are cultured and then injected into the patient. At our hospital, this treatment is applied for patients with lung cancer and breast cancer.



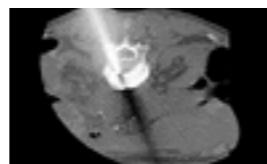
3 Anti-cancer drug sensitivity testing using CD-DST

A drug sensitivity test, using patient's tumor cells, enables selection of the drugs optimal for the treatment of individual tumors in advance of drug administration. At our hospital, this treatment is applied to gastrointestinal cancer, breast cancer, metastatic liver cancer, metastatic lung cancer and carcinomatous pleuroperitonitis.



4 Percutaneous vertebroplasty (PVP) for treating bone fragility caused by osteoporosis and bone tumors

In this treatment, bone cement is injected into fragile bones to enhance the strength of bones.



5 Treatment of bone fractures using ultrasound

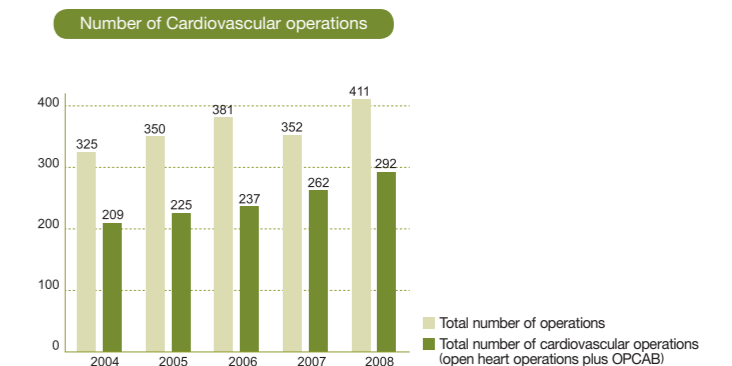
This is a type of treatment for arm and leg fractures that require an operation. After the operation, the area of the fracture is exposed to low-intensity ultrasound, which accelerates recovery. The time required for bone fusion is reduced by around 40%.



Providing High Quality Surgery

Promoting advanced cardiovascular (off pump coronary artery bypass) operations

In our institution almost all patients undergo coronary artery bypass grafting without cardiopulmonary pump. This operation requires advanced techniques, but is less invasive than conventional operation. Even elderly patients and patients for whom surgery could not otherwise be recommended because of the burden to the body can walk and eat the day after the operation, and are able to be discharged from the hospital within 1-2 weeks. In addition, the number of operations conducted each year has increased.



Renewed Quality Health Care Evaluation (ver.5.0) Certification

Having received its first approval in February 2004, our hospital renewed its Quality Health Care Evaluation Certification, which is provided by the Japan Council for Quality Health Care, on May 1, 2009. Our hospital has continued to strive to further strengthen the quality of its medical treatments, which have been evaluated as high quality.

"The Japan Council for Quality Health Care" evaluates the qualities of medical facilities from a neutral position in order to expand and improve the function of Japanese medical facilities.



▲ Renewed Certification

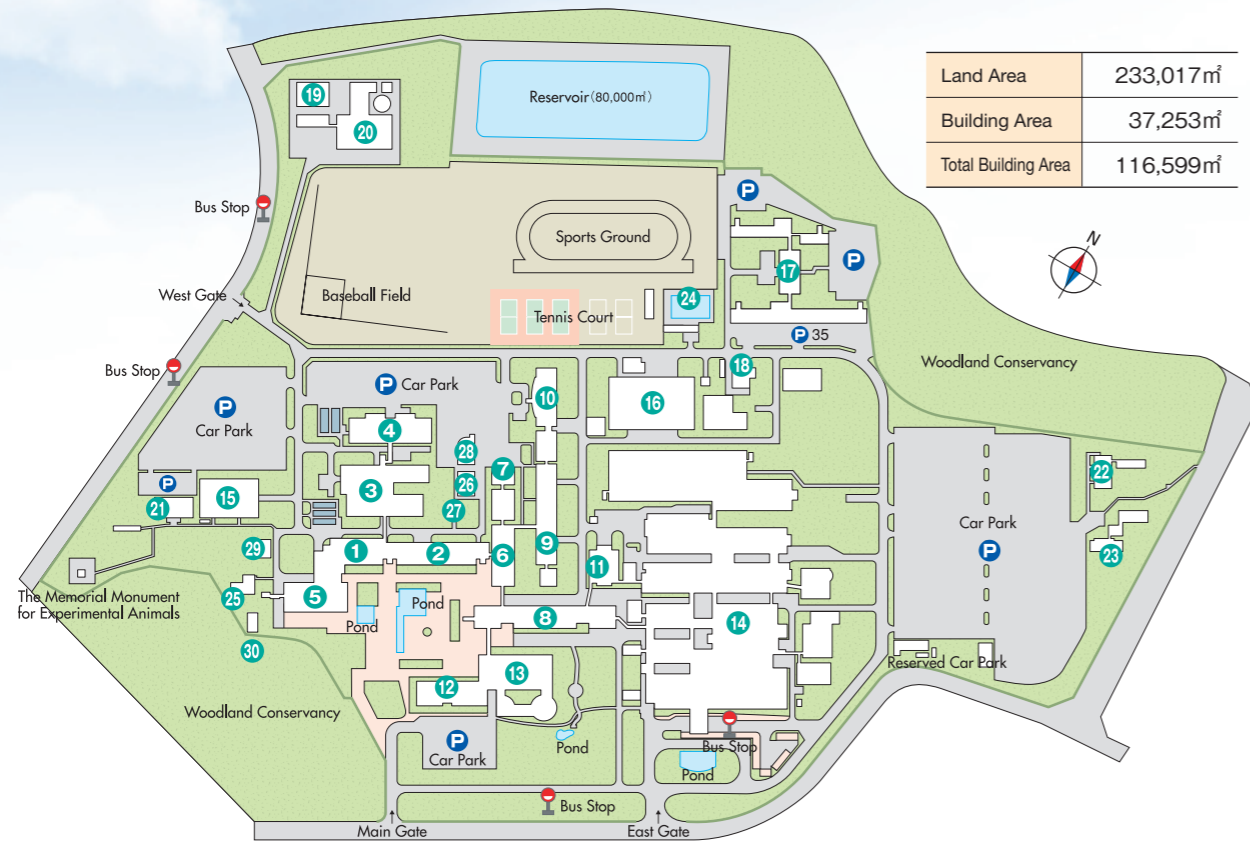
Introduction of the latest 3 Tesla (T) MRI equipment

To promote advanced medicine, the university hospital has set up 3-T and 1.5-T MRI equipment. By dramatically reducing the time for scans, it has become possible not only to demonstrate its usefulness in diagnosing acute strokes but also to capture minor changes in a brain. In addition, the hospital has increased its ability to diagnose aneurysms. It is also now possible to track distribution of nerve fibers and metabolic changes in the brain, and imaging diagnosis of the brain and spinal cord has been tremendously improved. It is expected that diagnosis of lesions in joints, breasts, and the pelvic cavity will improve using high definition images from the 3-T MRI.

Designated as the Shiga Core Hospital for Advanced Cancer Treatment

In November 2008, the university hospital was designated as the Shiga Core Hospital for cancer treatment, and the comprehensive cancer treatment program was launched. In order to improve the cancer treatment in Shiga prefecture, our university plays a role in training cancer specialists, and sends those specialists to affiliated hospitals. In order to standardize cancer treatment, our university takes part in the Shiga Cancer Treatment Coordination Council in Shiga prefecture.

MAP OF FACILITIES



| Number | Name of Building | Number | Name of Building |
|--------|---|--------|----------------------------------|
| 1 | General Education and Research Building | 16 | Energy Center |
| 2 | Basic Medicine Education and Research Building | 17 | Nurses' Housing |
| 3 | Basic Medicine Laboratories and Lecture Halls | 18 | Incinerator Facilities |
| 4 | School of Nursing Building | 19 | Waste Treatment Facilities |
| 5 | Student Center | 20 | Waste Water Treatment Facilities |
| 6 | Central Research Laboratory | 21 | Martial Arts Gymnasium |
| 7 | Molecular Neuroscience Research Center | 22 | Guest House |
| 8 | Clinical Medicine Education and Research Building | 23 | International House |
| 9 | Central RI Research Laboratory | 24 | Swimming Pool |
| 10 | Research Center for Animal Life Science | 25 | Music Hall |
| 11 | Clinical Lecture Halls | 26 | NMR Center |
| 12 | Administration Building | 27 | Storehouse |
| 13 | University Library | 28 | Biomedical Innovation Center |
| 14 | University Hospital | 29 | Nursery Center |
| 15 | Gymnasium | 30 | Creative Motivation Center |

NAME AND ADDRESS

Shiga University of Medical Science



MAP OF FACILITIES • NAME AND ADDRESS